

EVERYTHING YOU NEED IN AUDIO VISUAL EQUIPMENT FOR YOUR CORPORATE SPACE



AUDIO VISUAL SYSTEMS FOR YOUR CORPORATE OFFICE



PROJECTION SYSTEM

Boardroom Projection System	Pg 1
-----------------------------	------

VIDEO CONFERENCING

Lenovo ThinkSmart Hub 500	Pg 2
Logitech Tap	Pg 3
Logitech Rally/Lenovo SmartHub Bundles	Pg 4
Logitech Rally/Logitech Tap Bundles	Pg 5
Heckler Credenza	Pg 6
Why choose 3 Monkeys AV	Pg 7
PolyCom & HP Conferencing Bundles for Microsoft teams	Pg 8
PolyCom & Lenovo Bundles for Microsoft Teams & Zoom Rooms	Pg 9
Conferencing Microphone Array and Camera Solutions	Pg 10
Hanging Microphone Array	Pg 11
Huddle Room All in One Solutions	Pg 12

MAXHUB - ALL IN ONE VC & TOUCH DISPLAY

The All in one Touch Panel	Pg 13
MaxHub standard Panel	Pg 14
MaxHub Ultimate Panel	Pg 15
MaxHub Specs Sheet	Pg 16

MAXHUB ACCESSORIES

MaxHub Ultimate Accessories (Pen, Wireless Dongle and Accessories Container)	Pg 17
Wireless Mirroring Box	Pg 18
Electronic Height Adjustable Trolley and Fixed Floor Stand	Pg 19
Mobile TV Trolley, Small & Large	Pg 20

EDUTOUCH INTERACTIVE PANELS

EduTouch 55", 65", 75"	Pg 21
EduTouch Spec Sheet (55"-75")	Pg 22
EduTouch Large Panels 86", 98"	Pg 23
EduTouch Spec Sheet (86", 98")	Pg 24
EduTouch PC Module	Pg 25
EduTouch Trolley	Pg 26

ACOUSTIC TREATMENT SOLUTIONS

Cinema Round and Vixagon Panels	Pg 27
ViCloud Ceiling Panels	Pg 28

LECTERNS

Lectrum Classic/Aero, Single/Double Bay & AudioPro Lectern	Pg 29
Curved Truss Lectern, MaxHub Touch Screen Podium	Pg 30



BOARDROOM PROJECTION SYSTEM

Projection Systems

Starting at \$4999^{inc}

Complete Boardroom Projection System, Consisting of a *Data Projector*, *Projector Screen* and a *7 Input multi format switcher* making it nice and simple when switching between input sources.

Screen size and style is determined by available space, sizes ranging from 94" – 103" and styles can be a fixed screen, motorized or manual pull down.

We can mount the projector from your ceiling so it is out of the way leaving you with a neat and tidy boardroom table.



Audio System

To suit your projection system we install an audio system that is supplied with 2 x 20 watt Amplifiers and 2 x sleek white ceiling speakers (amount can vary depending on size of boardroom).

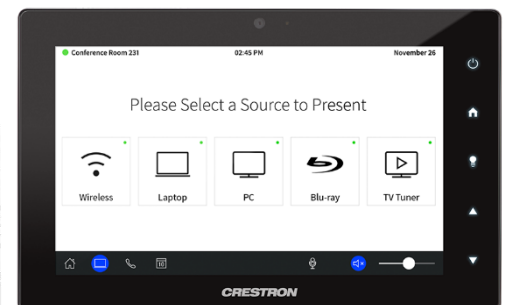


Control Panel

PUSH BUTTON OR TOUCH SCREEN

You can have the option of either a push button or touch screen controller that can be programmed to your requirements to turn on the projector, lower your screen, adjust the volume and switch to sources such as VGA/HDMI/PC/TV or Set top box inputs.

Control panel makes corporate presentations run nice and smoothly and is easy to switch between input sources.



Lenovo ThinkSmart Hub 500



Starting at \$2599^{inc}

Say hello to ThinkSmart Hub 500. Easy to deploy and use, this all-in-one, purpose-built Skype or Microsoft Teams Room Systems device is the key to more efficient meetings. Start on time, every time with one tap of your finger. Hear what everyone has to say, loud and clear. And see the difference this makes to your productivity—and bottom line

TECHNICAL SPECS

Processor	7th Gen Intel® Core™ i5-7500T Processor (6M Cache, 2.7 GHz, 3.3 GHz max), vPro™
Preload	OS: Windows 10 IoT Enterprise CBB X64 (RS3) App: Microsoft Skype Room Systems App
Memory	2 x 4GB, DDR4-2400, 2 x 260-pin SO-DIMM sockets, dual-channel capable
Storage	128GB M.2 SSD / PCIe NVMe
Optical drive	None
Graphics	Intel HD Graphics 630
Display	11.6" FHD (1920×1080), wide viewing angle, anti-glare, smudge resistant, 300 nits, 800:1 contrast ratio, 10-point touch 360° rotational display
Sensor	IR presence/motion sensor Automatically dim or brighten display Detection angle: +/- 45° from display Detection distance: 3 m at minimum
LED indicators	360° LED ring on hinge neck, indicates Skype status for all users in the room Power LED on power button
Chipset	Intel Q270 Chipset
Dimensions (W x D x H)	193.25 x 278.9 x 178.45 mm
Weight	Starting from 2.5 kg
Power Supply	90W, autosensing, 88% efficiency
Audio support	Dual 4W speakers, 2 omnidirectional microphones for 360° audio capture
Ethernet	Gigabit ethernet, Intel Ethernet Connection L219-LM, Wake on LAN®
Wireless LAN	Intel Dual Band Wireless-AC 8265, Wi-Fi 2×2 802.11ac + Bluetooth® 4.2, Intel vPro technology support
Wireless WAN	None
NFC	None
Manageability	Intel Active Management Technology 11.0, Intel vPro technology
Security chip	TPM 2.0, TCG certified
Ports	4 x USB 3.0 2 x HDMI-out 1 x HDMI-in 1 x ethernet (RJ45) 1 x combo audio/microphone jack
Certification	Skype for Business Group Certified



THIS SYSTEM CAN BE PARTNERED WITH A
CONFERENCING CAMERA OR SPEAKER TO CREATE A
VIDEO CONFERENCING PACKAGE.

Starting at \$3145^{inc}

Logitech Tap Touch Controller For Video Conferencing

Touch control for the workplace, including video conferencing room solutions for Google, Microsoft, and Zoom.

Video conferencing room solutions with Logitech Tap deliver calendar integration, touch-to-join, instant content sharing, and always-on readiness. Pre-configured with room-optimized software from Google, Microsoft, or Zoom, Logitech Room Solutions include all necessary components: Tap touch controller, small form factor computer, in-wall rated cabling, and Logitech MeetUp or Rally conference camera.

PACKAGE INCLUDES:

- Tap Touch Controller
- Logitech Strong USB 2.0 / 3.0 / 3.1 / 3.2 Cable 10 m
- Type A (male) to Type C (male)
- Aramid-reinforced
- Plenum Rated
- Eca / IEC 60332-1-2 Compliant
- 20 mm Conduit friendly
- HDMI 1.4a cable 2.0 m
- Power adaptor with regional plugs (100-240v) 2.95 m
- VESA Mounting Screws (4)
- Microfiber Cloth
- Documentation



Logitech Rally Ultra-HD Conferencecam + Lenovo Smarthub 500

Starting at \$6459^{inc}

MEDIUM ROOM

LOGITECH RALLY PREMIUM ULTRA-HD CONFERENCECAM SYSTEM WITH AUTOMATIC CAMERA CONTROL

Logitech Rally delivers studio-quality video, unmatched voice clarity, and RightSense® automation for better meetings with video conferencing applications that work with USB devices, including Google Hangouts Meet, Microsoft Skype® for Business, Microsoft Teams, and Zoom. With modular audio, thoughtful cable management and premium finishes, Rally integrates beautifully into medium and larger rooms.

&

LENOVO THINKSMART HUB 500



PACKAGE INCLUDES:

1 x Logitech Rally Package:

- Rally Camera
- Rally Display Hub
- Rally Table Hub
- Rally Speaker (x1)
- Rally Mic Pod (x1)
- Remote control
- USB Type C to USB Type C
- USB Type A to USB Type B
- CAT6A Ethernet cable
- HDMI Type A (x2)
- A/C cables (x2)
- Power Supplies (x2)
- Documentation

1 x Lenovo Think Smart Hub

LARGE ROOM

LOGITECH RALLY PLUS PREMIUM ULTRA-HD CONFERENCECAM SYSTEM WITH AUTOMATIC CAMERA CONTROL

Includes 1 x Camera, 2 x Speakers, 2 x Microphone Pods and 2 x Connection hubs.

&

LENOVO THINKSMART HUB 500



PACKAGE INCLUDES:

1x Logitech rally PLUS Package:

- Rally Camera
- Rally Display Hub
- Rally Table Hub
- Rally Speaker (x2)
- Rally Mic Pod (x2)
- Remote control
- USB Type C to USB Type C
- USB Type A to USB Type B
- CAT6A Ethernet cable
- HDMI Type A (x2)
- A/C cables (x2)
- Power Supplies (x2)
- Documentation

1 x Lenovo Think Smart Hub

Logitech Rally Ultra-HD Conferencecam + Logitech Tap Control System

Starting at \$7005^{inc}

MEDIUM ROOM

LOGITECH RALLY PREMIUM ULTRA-HD CONFERENCECAM SYSTEM WITH AUTOMATIC CAMERA CONTROL

Logitech Rally delivers studio-quality video, unmatched voice clarity, and RightSense® automation for better meetings with video conferencing applications that work with USB devices, including Google Hangouts Meet, Microsoft Skype® for Business, Microsoft Teams, and Zoom. With modular audio, thoughtful cable management and premium finishes, Rally integrates beautifully into medium and larger rooms.

&

LOGITECH TAP CONTROL SYSTEM



PACKAGE INCLUDES:

1 x Logitech Rally Package:

- Rally Camera
- Rally Display Hub
- Rally Table Hub
- Rally Speaker (x1)
- Rally Mic Pod (x1)
- Remote control
- USB Type C to USB Type C
- USB Type A to USB Type B
- CAT6A Ethernet cable
- HDMI Type A (x2)
- A/C cables (x2)
- Power Supplies (x2)
- Documentation

1 x Logitech Tap Control System

LARGE ROOM

LOGITECH RALLY PLUS PREMIUM ULTRA-HD CONFERENCECAM SYSTEM WITH AUTOMATIC CAMERA CONTROL

Includes 1 x Camera, 2 x Speakers, 2 x Microphone Pods and 2 x Connection hubs.

&

LOGITECH TAP CONTROL SYSTEM



PACKAGE INCLUDES:

1x Logitech rally PLUS Package:

- Rally Camera
- Rally Display Hub
- Rally Table Hub
- Rally Speaker (x2)
- Rally Mic Pod (x2)
- Remote control
- USB Type C to USB Type C
- USB Type A to USB Type B
- CAT6A Ethernet cable
- HDMI Type A (x2)
- A/C cables (x2)
- Power Supplies (x2)
- Documentation

1 x Logitech Tap Control System

AV Heckler Credenza

Starting at \$1232^{inc}

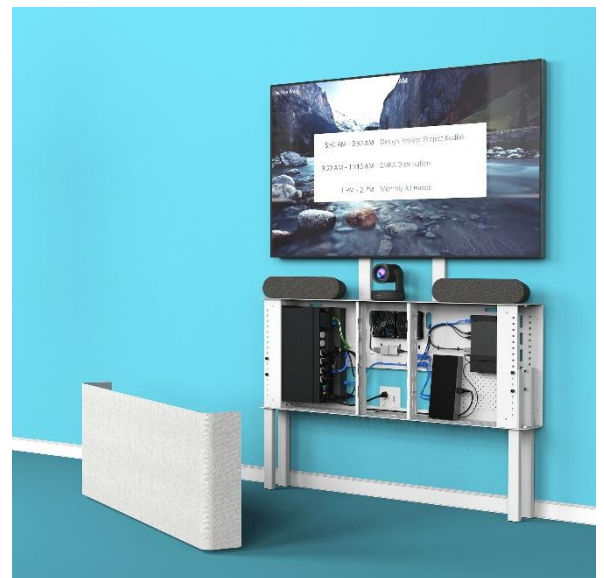
DESIGNED TO BE SEEN

A Heckler Credenza gives your corporate huddle, meeting or boardroom a sleek finish. All wires, amplifiers and components are neatly fitted into the credenza body with cooling fans and is covered in a stylish fabric wrap. This also avoids others meddling with the cables and makes relocation nice and simple.

NOT A WIRE IN SIGHT.

INCLUDES:

- AV Credenza body
- Fabric-wrapped cover panel
- Two Preinstalled cooling fans
- One USB adapter to provide power to the fans
- Velcro straps and zip tie anchor hardware
- One French cleat
- Four SNAPTGGLE wall anchors BC Size
- Four mounting



WHAT WE DO FOR YOU – OUR 3 STAGE ASSESSMENT PROCESS

When looking to buy audio visual systems and equipment for your school, corporate boardroom, event venue, recreation centre, conference facility, bar or restaurant or place of worship in Perth, look no further than the professionals at 3 Monkeys Audiovisual.

1. SITE INSPECTION & FREE SYSTEM ANALYSIS

Firstly we visit your workplace and assess your needs and/or frustrations with your existing system. We take digital photographs, measurements and discuss what it is you would like to achieve and offer you free advice and assistance.

2. SYSTEM PLAN

Following our free analysis, we go back to our office to design a system for you that takes into account your specific requirements and other important factors such as functionality, ease of use and aesthetics.

3. PRESENTATION

You are presented with a detailed proposal including system design options, product information and an itemised budget... not a bundled price with hidden costs like you might have found elsewhere...

Our 3 Stage Analysis ensures the system we recommend is exactly what you need... And you will be educated throughout the process, the system fits your budget, installation is considered and worked out (not worked out after the sale!) and best of all, this is a FREE service for you.

Polycom + HP Bundles For Microsoft Teams



SMALL ROOM BUNDLE

Starting at \$4125^{inc}

- HP Elite Slice G2 Audio Ready with Microsoft Teams Rooms
- Polycom Studio

Ideal for small huddle rooms using Microsoft teams and already have a screen.



MEDIUM ROOM BUNDLE

Starting at \$5805^{inc}

- HP Elite Slice G2 Audio Ready with Microsoft Teams Rooms
- Polycom Trio 8500 Conference camera
- Polycom EagleEye IV USB camera

Ideal for medium sized meeting rooms using Microsoft teams wanting high quality audio and video conferencing devices that need minimal effort in training users.



LARGE ROOM BUNDLE

Starting at \$6315^{inc}

- HP Elite Slice G2 Audio Ready with Microsoft Teams Rooms
- Polycom Trio 8500 Conference camera with extension microphones
- Polycom EagleEye IV USB camera

Ideal for larger meeting rooms using Microsoft teams wanting high quality audio and video conferencing devices with multiple extension microphones for large conference calls.



Polycom + Lenovo Bundles For Microsoft Teams Or Zoom



SMALL ROOM BUNDLE

Starting at \$4119^{inc}

- Lenovo ThinkSmart Hub 500
- Polycom Studio

Ideal for small huddle rooms using Zoom or Microsoft Teams that are wanting an easy to use conferencing device and an all in one audio and video bar.



MEDIUM ROOM BUNDLE

Starting at \$6205^{inc}

- Lenovo ThinkSmart Hub 500
- Polycom Trio 8500 Conference phone with bluetooth
- Polycom EagleEye IV USB camera

Ideal for medium sized Microsoft Teams and Zoom meeting rooms after an easy to use conferencing device with a standalone high quality conference phone and camera.



LARGE ROOM BUNDLE

Starting at \$6715^{inc}

- Lenovo ThinkSmart Hub 500
- Polycom Trio 8500 Conference phone with extension microphones
- Polycom EagleEye IV USB camera

Ideal for large Teams and Zooms meeting rooms after an easy to use conferencing device with a standalone high quality conference camera and phone with extension microphones for large group calls.



Microphone Solutions

Condor Microphone Array

The **Phoenix Audio Condor** is a beamforming microphone that picks up audio clearly, all while rejecting and cancelling out noises, echoes, and reverberation.

Mounted above your LED panel, it is an excellent solution for video-conferencing, especially when multiple parties are involved at either end of the connection.



Starting at \$670_{inc}

Microphone Pod

Wireless USB desk top Speakerphone.

Single



OR

Double



3X or 10X Optical Zoom Camera

The HuddleCamHD USB3.0 or 10 is built to provide you with the right camera for your room. Offering superb 1080p quality.

You will notice the difference right away!

FEATURES OF 3X CAMERA

Zoom: 3X Optical Zoom
Resolution: 1920x1080p
Field of View: 36~81 Degrees
Frames Per Second: Up to 30 fps
Connection Cable: USB 2.0
RS-232: Yes, In and Out
Presets: 64
Dimensions in: 4.88"W x 5.5"H x 4.75"D (6" Height Extended)
Dimensions mm: 124mm x 139mm x 120mm (152mm Height Ext)
Weight: 1.66 lbs (.75 kg)
Box Dimensions: 8.75" x 8.88" x 7" (222mm x 225mm x 178mm)
Box Weights: 3.66 lbs | 1.66 kg
Warranty: 2 Years



Starting at \$850_{inc}

Condor Microphone and HuddleCam shown here mounted to your LED screen



Hanging Microphone Array

Starting at \$2798^{inc}

The ES954 Hanging Microphone Array, an ideal, cost-effective solution for huddle rooms, conference rooms and other meeting spaces. When controlled by the Audio-Technica ATDM-0604 Digital SMARTMIXER™, the four-capsule microphone array provides 360-degree coverage through virtual hyper-cardioid or cardioid outputs which can be steered horizontally and tilted vertically.



Intended primarily for video conferencing applications, the ES954 may be used singly or in multiples to capture every person speaking in a room, with the total number of channels restricted only by the capacity of the mixer or DSP device controlling the system.

THIS PACKAGE INCLUDES

- 1 x Digital Mixer
- 1 x Hanging Microphone array
- 1.2 Metre hanging cable
- 1 x Ceiling mount



PH: 08 9228 1681

W: 3monkeysav.com

E: info@3monkeysav.com



HUDDLE ROOM ALL IN ONE SOLUTIONS

SIMPLY JUST ADD YOUR SCREEN AND PC

Yamaha CS700 Video and Sound bar

Starting at \$1549^{inc}

Video & Sound Bar – USB all-in-one video/sound collaboration system for huddle rooms.



Featuring beam forming microphone array, 4 speakers elements, 120' wide angle camera, Bluetooth® and remote administration via IP and SNMP.

Starting at \$1990^{inc}

Poly Studio USB Video Bar

Poly Studio delivers best-in-class audio and video in an easy-to-use USB video bar. The features you need for a price you can afford.



Big ideas can happen in small spaces. Poly Studio sets the stage. With its room-filling sound and pinpoint accurate microphones, it makes sure no flashes of brilliance are lost.

Logitech Meetup All in One Conference Camera

Starting at \$1539^{inc}

All-in-One ConferenceCam with an extra-wide field of view and integrated audio, perfect for small conference and huddle rooms.

With integrated audio optimized for huddle room acoustics, everyone can be heard as well as seen.

KEY FEATURES:

- See everyone, even those close to the camera
- RightSense™ Technologies with automatic framing
- Compact design minimizes cabling and clutter



THE ALL IN ONE VIDEO CONFERENCING INTERACTIVE TOUCH PANEL

3 BUILT IN CAMERAS

**BUILT IN
MICROPHONE ARRAYS**

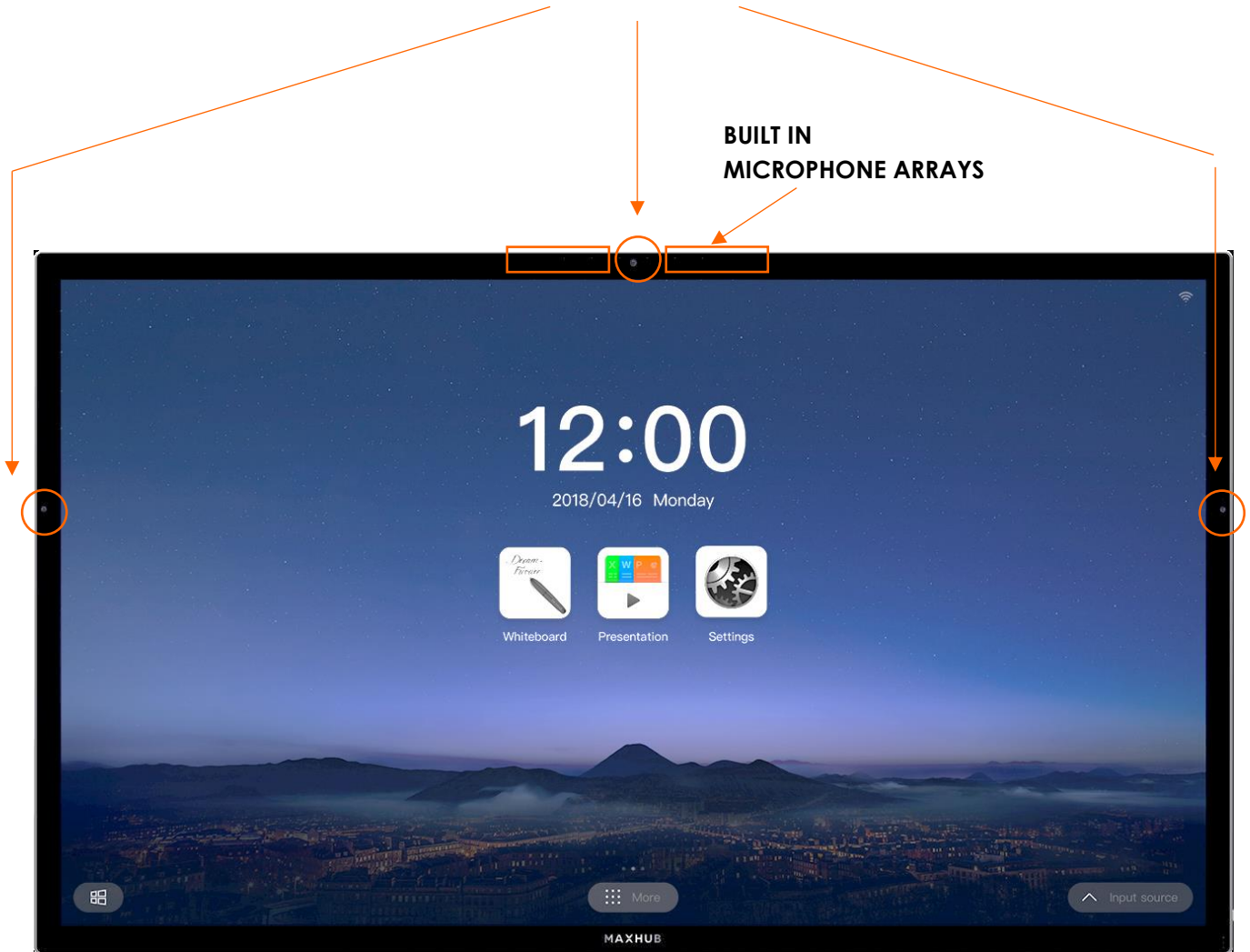


image is Maxhub ultimate

KEY FEATURES

- Single Click Video Conferencing with built in microphones and cameras.
- Interactive mirroring capabilities
- Intelligent 20 point touch writing
- Ideal device for remote collaboration.



**SCAN TO WATCH FEATURES
OF MAXHUB PANELS**



All in One VC & Touch Display

Starting at \$4395^{inc}

MaxHub X3 Standard Series



Interactive Touch Panel with cameras and microphones built in, making Video Conferencing nice and simple. The Maxhubs are the ideal system for remote collaboration using their excellent features including Intelligent Writing, Interactive Mirroring and Single Click Video Conferencing.

WITH 4 STYLISH SIZES TO CHOOSE FROM: 55", 65", 75" & 86"

ULTRA HD DISPLAY

- Higher resolution for an immersive experience
- Anti-Glare Technology to ensure an excellent picture in the brightest environment

WIRELESS SHARING

- Display your computer, laptop, smartphone or tablet wirelessly to the Panel, making your presentation vivid & engaging.
- Wireless Display is achieved in 0.09s using most standard computer equipment at resolutions of 1366*768
- Display 4 devices simultaneously with 0.09s fast display
- Remote Control from your handheld device
- Wireless Display with Touch capability from computers & laptops running Windows 7 or later, MacBook's running MacOS 10.10 or later.
- Wireless Display from handheld devices (Android Tablets running Android 5.0 or later and iPads/iPhones with iOS 9 or later)

INTELLIGENT WRITING

- Infrared Touch Technology
- Ultra-responsive writing at 0.04 response time with 1mm accuracy
- Intelligent Graphic Recognition in Windows, recognises rectangles, triangles, circles, polygons, diamonds and lines
- Smart Chart
- Table drawing in Windows, allows for adding and removing rows and columns

REMOTE COLLABORATION

- Brand-new Video Conferencing Solution, with just a single click to start your online Video Conference.
- Built-in 6 Microphone Array
- 8MP Camera
- Remote Screen Sharing
- Annotation Synchronizing
- 8m Audio pickup

EXCELLENT PERFORMANCE

- Intel Core i5 Processor
- 8GB RAM
- Android 7.0 and Windows 10 Dual Operating Systems





MAXHUB

MaxHub X3 Ultimate Series



Starting at \$14,295^{inc}

Integrating Capacitive and EMR Touch Technology the MAXHUB X3 Ultimate Series provides an enhanced experience with effortless writing, screensharing and collaboration.

With 2 stylish sizes to choose from: 65" & 86"

ULTRA HD DISPLAY

- Ultra HD resolution for an immersive experience
- Stylish ultra-thin 19mm bezel that gives an 88.9% screen to body ratio
- Anti-Glare Technology to ensure an excellent picture in the brightest environment

WIRELESS SHARING

- Display your computer, laptop, smartphone or tablet wirelessly to the Panel, making your presentation vivid & engaging.
- Wireless Display is achieved in 0.09s using most standard computer equipment at resolutions of 1366*768
- Display 4 devices simultaneously with 0.09s fast display
- Remote Control from your handheld device
- Wireless Display with Touch capability from computers & laptops running Windows 7 or later, MacBook's running MacOS 10.10 or later.
- Wireless Display from handheld devices (Android Tablets running Android 5.0 or later and iPads/iPhones with iOS 9 or later)

INTELLIGENT WRITING

- Capacitive (PCAP) and Electromagnetic Resonance (EMR) dual touch technologies
- Fast 0.04s response time using the EMR pen
- Incredible 0.5mm accuracy with 1024 levels of pressure sensing.
- Dual-pen & Dual-colour writing: MAXHUB X3 Ultimate Series have the function of precise writing and dual-pen writing.
- Intelligent Graphics Recognition & Smart Charting

REMOTE COLLABORATION

- Brand-new Video Conferencing Solution, with just a single click to start your online Video Conference.
- 3 x 12mp Cameras (top, left & right of screen)
- 6 Microphone Array with 8m audio pickup
- Screen Sharing & Annotation Synchronizing

EXCELLENT PERFORMANCE

- Integrated Intel Core i7* Processor, 16GB RAM, 246GB SSD
- Android 7.0 and Windows 10 Dual Operating Systems



Available in sizes 65" & 86"

Standard VS Ultimate Specifications



	MAXHUB X3 Ultimate	MAXHUB X3 Standard
Display	65/86 inch 16:9 display ratio ELED backlight 3840 (H) × 2160 (V) resolution Horizontal 178°, Vertical 178° viewing angle	55/65/75/86/98 inch 16:9 display ratio DLED backlight 3840 (H) × 2160 (V) resolution Horizontal 178°, Vertical 178° viewing angle
Touch System	Smooth anti-glare toughened glass P-CAP+EMR 20 touch points Finger+EMR Pen ±1mm(90% touch area) 0.5mm EMR Pen Accuracy	Anti-glare Toughened glass Infrared 20 touch points Finger+Opaque object(≥2mm) ±1mm(90% touch area)
Camera	Triple cameras 12-megapixels camera Automatic white balance, adaptive ambient brightness Lens distortion≤1% support smart switch and face recognition	Single camera 8-megapixels camera Automatic white balance, adaptive ambient brightness Lens distortion≤1% support smart switch and face recognition
Microphone Array	Omni-directional 6-array microphones 8m voice picking-up 16KHz sampling frequency 16bit sampling rate Automatic gain automatic noise reduction Support echo cancellation Support auditory localization	Omni-directional 6-array microphones 8m voice picking-up 16KHz sampling frequency 16bit sampling rate Automatic gain automatic noise reduction Support echo cancellation Support auditory localization
Speaker	80Hz~20KHz 3 acoustic chamber Support stereo	80Hz~20KHz 3 acoustic chamber Support stereo
Operating System	Dual A73 CPU 1.2GHz Dominant frequency 5 Core Graphic Acceleration Chip 2G RAM 32G ROM Android 7.0+win10	Dual A73 CPU 1.2GHz Dominant frequency 5 Core Graphic Acceleration Chip 2G RAM 32G ROM Android 7.0, optional Windows 10
PC Module	Ultra-thin Pluggable Intel® Core series PC module Intel® Core i3/ i5 / i7 (optional) DDR4 8G / 16G (optional) 128G / 256G (optional) Intel® HD Graphics GPU	OPTIONAL: Ultra-thin Pluggable Intel® Core series PC module Intel® Core i3/ i5 / i7 (optional) DDR4 8G / 16G (optional) 128G / 256G (optional) Intel® HD Graphics GPU
Environment Requirement	100-240V~ 50 / 60Hz Altitude below 5000m ≤0.5W standby power consumption	100-240V~ 50 / 60Hz Altitude below 5000m ≤0.5W standby power consumption
PRICING	65" Panel, from: \$14,295inc 86" Panel, from: \$25,295inc	55" Panel, from: \$4395inc 65" Panel, from: \$5495inc 75" Panel, from: \$6595inc 86" Panel, from: \$10,995inc

MAXHUB ULTIMATE SERIES ACCESSORIES

Electromagnetic Pen

Starting at \$110_{inc}

Electromagnetic Touch Pen. Compatible with MAXHUB Ultimate series

- Electromagnetic Resonance.
- 0.5mm delicate writing
- 1 x AAA (Section 7 battery)
- 80 hours of usage time
- Auto-sleep in 2~3 idle minutes.



Wireless Dongle

Starting at \$285_{inc}

Sharing without the limitation of cables.(ultimate series online)

The MAXHUB wireless screen sharing dongle breaks through the limitation of a complicated cabled connection.

Wireless mirroring is easily achieved and ideas wirelessly presented.

- Autorun driver
- Support Windows7, mac OS10.10 or later.
- Compatible with USB2.0 or later, and Type A connector.



Accessories Container

Starting at \$110_{inc}

The MaxHub Accessories container stores:

- 3 x Screen share dongles
- 2 x Smart pens simultaneously



Wireless Mirroring Box

Starting at \$1425^{inc}

Real time mirroring, without the limitation of cables

Maxhub Wireless Mirroring Box, including 2 x SM01 USB Dongle's.

Allows for up to 4 devices to be connected and displayed simultaneously.

Only with one click, lossless video and image can be presented in 0.09 seconds*. One image can be displayed simultaneously on two screens.

MAXHUB multi-screen interactive technology supports 4-split screen real time mirroring, showing you a clear data comparison.

Compatible with Maxhub, iOS, OSX, Android and Windows Programs and SM01 USB Dongle.



Electronic Height Adjustable Trolley

Starting at \$1975_{inc}

MaxHub Electronic Height Adjustable Mobile Stand. (EST01)

Suitable for panel sizes 55", 65" & 75" Panels

- Dimensions: 1234 x 844 x (1284~1784)mm
- Flexible Height Adjustment
- Easy to move
- Compatible with 55/65/75" Panels.
- Sleek look



Fixed Floor Stand

Starting at \$1755_{inc}

MaxHub Fixed Floor Stand (EST04)

Suitable for panel sizes 55", 65" & 75" Panels

- Dimensions: 960 x 377 x 960 mm
- Compatible with 55/65/75" Panels.
- Sleek look



Mobile TV Trolley (Small)

Starting at \$659^{inc}

MaxHub Mobile TV Stand for 55" & 65" Panels (ST26A)

- Flexible Height Adjustment
- All metal design, simple and durable
- Easy to move

Physical Specifications

- Dimension (L*W*H) 945*600*(1518~1893) mm
- Dimension with Package (L*W*H) 1210*700*245mm
- Maximum adjustable lifting size of the inner tube 375mm
- Net Weight 38.5kg
- Gross Weight 43kg
- Max Load 60kg
- Max Load Size Applies to the 55 inches & 65 inches
- Support Wall-hanging WIB9060C/WIB9060F/WIB9060G
- Truckle Size 117*80*91mm
- Material PU
- Type(Mute/Non-mute) Mute



Accessories

- Screw Accessory Package 1 pcs
- Quick Start Guide 1 pcs

Mobile TV Trolley (Large)

Starting at \$769^{inc}

MaxHub Large Mobile TV Stand for 65", 75" & 86" Panels (ST23A)

- Flexible Height Adjustment
- All metal design, simple and durable
- Easy to move

Specifications

- Dimension: (L*W*H) 1216*650*1879 (mm)
- Dimension with Package: (L*W*H) 1953*950*186 (mm)
- Gross Weight: 60.5kg
- Net Weight: 53.5kg
- Max Load: 150kg
- Max Load Size: Below 86 inch (including 86 inch)
- Truckle
- Size: 92*72*65 (mm)
- Material: PU
- Type: Non mute
- Support Wall-hanging: 9060A/9060F

Accessories

- Screw Accessory Package 1
- Quick Start Guide 1



Starting at \$4395^{inc}

EduTouch 55", 65", 75"



We specialise in interactive LED technology and can offer varying screen sizes ranging from 55 to 75 inch and large format 86 and 98 inch options. Wall mount or mobile trolley options are available to suit your business. All of our corporate panels come with EasiNote software free of charge.

Ongoing staff training & support is provided to allow users the ability to use the panel to its full potential.

This brings greater flexibility and support to your business as well as delivering the "wow" factor to your clients when presenting.

KEY FEATURES:

- Touch control (white board functionality without a pc)
- 4K Resolution
- High brightness
- Web browsing
- 20 point touch
- PC module optional for all EduTouch panels
- FREE EasiNote Software
- Toughened 3mm glass
- 5 year on-site warranty
- MAC and Windows compatible
- Maintenance free



Your investment is backed with a
5 year on site manufacturer's warranty
for added peace of mind.



55 inch panel

Tech Specs:

- Screen Type: LED
- Integrated Android Interface with 20 Point Touch Control
- Resolution: 3840 x 2160
- Brightness: 350 cd/m2
- Contrast: 1200:1
- Response Time: 9ms
- Number of Colours: 1.07B (10bit)
- Refresh Rate: 60Hz
- Viewing Angle: 178°
- 20 Point Touch
- Net weight 32Kg
- Dimensions 1302mm x 791mm x 98mm
- Display Area 1209.6mm x 681.4 mm

Ports Available:

- 2 x HDMI IN
1 x HDMI OUT
1 x VGA IN
- Component Video In (optional)
- 3.5mm Audio IN/OUT
- Digital Audio Out
- RS232 Control
- 6 x USB Media Port
- 1 x USB Touch Port

Starting at \$4395^{inc}

65 inch panel

Tech Specs:

- Screen Type: LED
- Integrated Android Interface with 20 Point Touch Control
- Resolution: 3840 x 2160
- Brightness: 350 cd/m2
- Contrast: 1200:1
- Response Time: 9ms
- Number of Colours: 1.07B (10bit)
- Refresh Rate: 60Hz
- Viewing Angle: 178°
- 20 Point Touch
- Net weight 45.6Kg
- Dimensions 1521mm x 914mm x 98mm
- Display Area 1428.48mm x 803.52 mm

Ports Available:

- 2 x HDMI IN
1 x HDMI OUT
1 x VGA IN
- Component Video In (optional)
- 3.5mm Audio IN/OUT
- Digital Audio Out
- RS232 Control
- 6 x USB Media Port
- 1 x USB Touch Port & 1 x LAN (RJ45)

Starting at \$5495^{inc}

75 inch panel

Tech Specs:

- Screen Type: LED
- Integrated Android Interface with 20 Point Touch Control
- Resolution: 3840 x 2160
- Brightness: 350 cd/m2
- Contrast: 1200:1
- Response Time: 8ms
- Number of Colours: 1.07B (10bit)
- Refresh Rate: 60Hz
- Viewing Angle: 178°
- 20 Point Touch
- Net weight 58.6Kg
- Dimensions 1763mm x 1034mm x 100mm
- Display Area 1649.664 X 927.93mm

Ports Available:

- 2 x HDMI IN
1 x HDMI OUT
1 x VGA IN
- Component Video In (optional)
- 3.5mm Audio IN/OUT
- Digital Audio Out
- RS232 Control
- 6 x USB Media Port
- 1 x USB Touch Port & 1 x LAN (RJ45)

Starting at \$7695^{inc}



LARGE EDUTOUCH INTERACTIVE PANELS

EduTouch 86" & 98"

Starting at \$14,295^{inc}



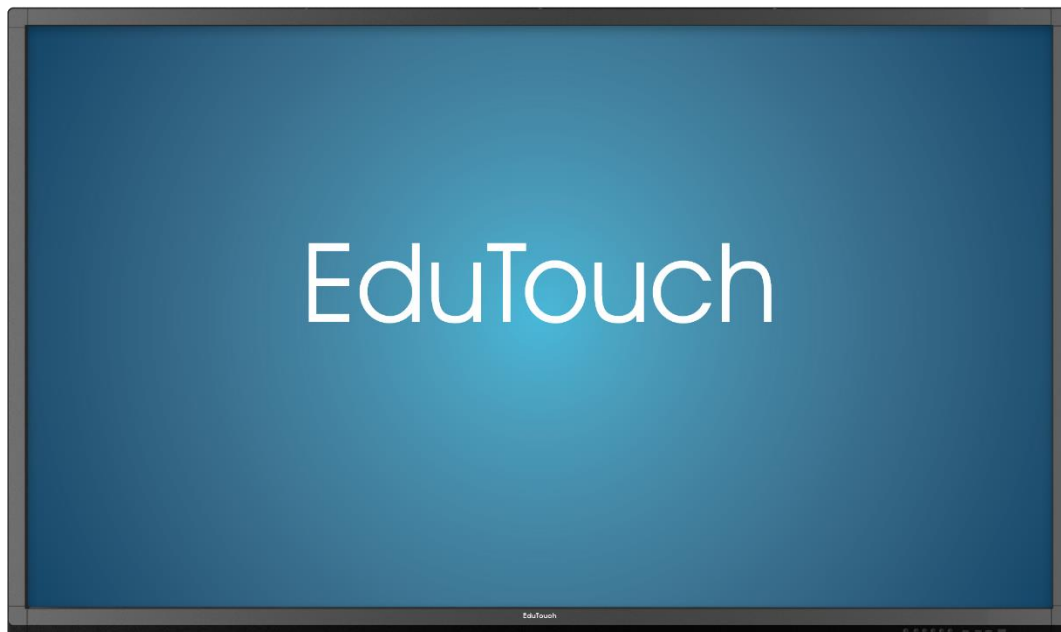
For that added WOW factor, we also offer 4K resolution (*Ultra Hi Definition*) 86 and 98 inch options.

Wall mount or mobile trolley options are available to suit your corporate office or boardroom.

All of our corporate panels come with EasiNote software FREE of charge.

Ongoing staff training & support is provided to allow users the ability to use the panel to its full potential.

This brings greater flexibility and support to your business as well as impressing your clients when doing a presentation.



Key Features:

- Integrated Android Interface with Touch
- Control (Whiteboard functionality without a PC)
- Web Browsing without a PC
- UHD Resolution (3840 x 2160 Pixels)
- 20 Point Touch on 86" (98" is 10 Point touch)
- PC Module optional for all EduTouch
- Panels
- Toughened Glass (Mohs Scale Level 7)
- Anti-Glare Glass
- 5 Year on site warranty
- MAC and Windows Compatible
- Bluetooth and Dual-Band WiFi



86 inch panel

Tech Specs:

- Screen Type: LED
- Integrated Android Interface with Touch Control
- Resolution: 3840 x 2160
- Brightness: 330 cd/m2
- Contrast: 1200:1
- Response Time: 8ms
- Number of Colours: 1.07B (10bit)
- Refresh Rate: 60Hz
- Viewing Angle: 178°
- 20 Point Touch
- Net weight 75.3Kg
- Dimensions 1988 x 1178 x 99.6 mm
- Display Area 1895.04mm x 1065.96mm

Ports Available:

- 2 x HDMI IN
- 1 x HDMI OUT
- 1xVGA IN, Component Video In (optional)
- 3.5mm Audio IN/OUT
- RS232 Control
- 6 x USB Media Port
- 2 x USB Touch Port

Starting at \$14,295^{inc}



98 inch panel

Tech Specs:

- Screen Type: LED
- Integrated Android Interface with Touch Control
- Resolution: 3840 x 2160
- Brightness: 440 cd/m2
- Contrast: 1300:1
- Response Time: 5ms
- Number of Colours: 1.07B (10bit)
- Refresh Rate: 120Hz
- Viewing Angle: 178°
- 10 Point Touch
- Net weight 150Kg
- Dimensions 2257 x 1335 x 118mm
- Display Area 2158.84mm x 1214.35mm

Ports Available:

- 3 x HDMI
- 1 x HDMI OUT
- 1 x DP IN
- 1 x VGA IN, Component Video In (optional)
- 3.5mm Audio IN/OUT
- Digital Audio Out
- RS232 Control
- 6 x USB Media Port
- 2 x USB Touch Port

Starting at \$31,055^{inc}

EduTouch PC Module (Built In)

Starting at \$1425^{inc}

An optional PC Module instantly turns your new EduTouch interactive panel into a giant computer screen.

This does away with the need to attach an external laptop or PC hard drive and avoids having to turn on multiple sources. Not to mention all those extra cables!!!

Both your LED panel and internal PC module are activated with one simple switch on the front of the panel.

PC MODULE FEATURES:

- Intel Core i5
- DDR4/8GB Memory
- 256GB SSD
- Bluetooth 4.2
- Dual-Band Wi-Fi 2.4/5GHz
- Microsoft Windows 10 Home or Pro



PC Module slots into side of panel and is powered via panel's internal power - no messy cables.



EduTouch Gas Strut Height Adjustable Trolley

Starting at \$1645^{inc}



The EduTouch Gas Strut Height Adjustable Mobile Solution is a low cost versatile stand that allows for height adjustability via two in-built gas struts.

Simply undo locking mechanisms and adjust the TV panel by pulling up or pushing down.

The EduTouch panel is securely mounted to the trolley and the overall design provides stability and is compatible with all EduTouch panels (55", 65", 75", 86" and 98").

The trolley allows for proper cable management, the laptop arm can be mounted on either side of trolley which also fits through standard doorways.

This mobile trolley can bring great flexibility to your office boardroom, conference room or staff room.

Cinema Round

Starting at \$1100^{inc}

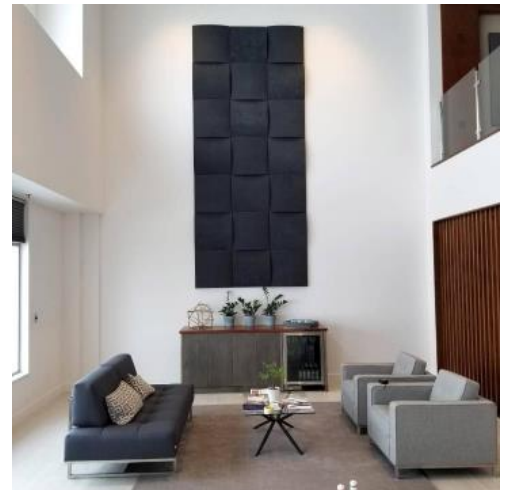
Cinema Round panels are designed to maximise frequency absorption from 100 to 5000 Hz. They are perfect for correcting sound issues in a boardroom by lowering reflectivity issues and making your meetings much more convenient.

The finish is also high quality soft material interior design standard, so not only will they perform sonically, but also visually.

They can be placed on walls and ceiling for effect.

STANDARD COLOURS

(Other colour options available)

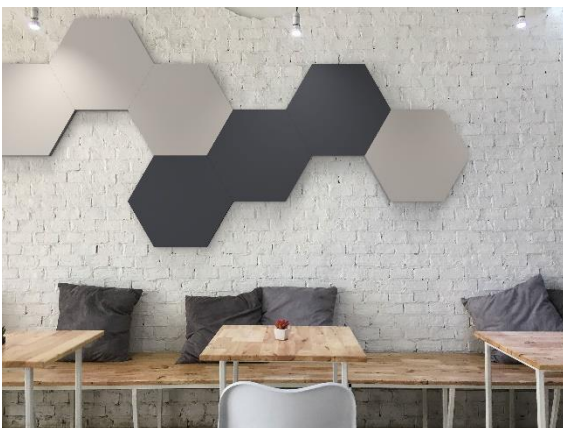


Vixagon Panels

Starting at \$1100^{inc}

Vixagon 40 FS Premium panels are designed to maximise frequency absorption from 100 to 000 Hz. Not as deep as Cinema Round, they still perform well over these frequencies to about 80% of the level of Cinema Round.

Being Hexagon design, it is possible to create some very unique looking designs. In some rooms it also may be more desirable to have "thinner" acoustic treatment.



The finish is also high quality soft material interior design standard, so not only will they perform sonically, but also visually. They can be placed on walls and ceiling for effect.

STANDARD COLOURS

(Other colour options available)



ViCloud Ceiling Panels

Starting at \$2000^{inc}

ViCloud are designed for ceiling use only and focus on absorption of frequencies from 500 to 5000 Hz.

These can be used in conjunction with Cinema Round and Vixagon panels placed on the walls.

The advantage is their mounting mechanism enables a more flexible positioning proposition in a Boardroom, allowing for placement at differing heights if required as well as minimizing attachment points to the substrate surface.



In many cases, ViCloud could be sufficient enough in a Boardroom for the desired acoustic effect. These are especially effective for rooms that have only (or majority of) glass walls.

Made with environmentally friendly VicPET Wool (made from 85% recycled materials), they offer a very simple, effective and impactful solution.

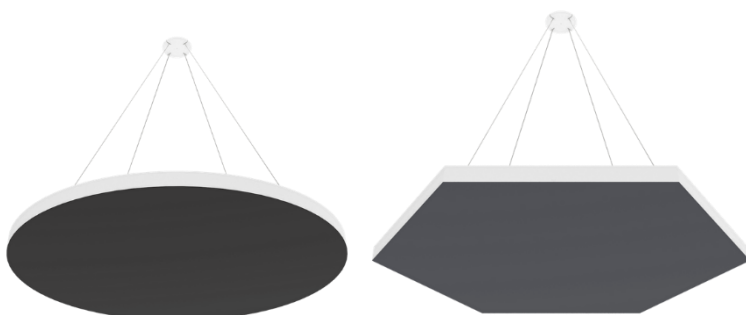
Standard shape is Round, however they can be ordered in:

- Square
- Hexagon
- Petal shapes

Optional Colours:

- Blue
- Light Grey
- Purple
- Pink, Red,
- Musk Green
- Celestial Blue
- Pumpkin Orange
- Bordeaux
- Brown
- Orange

STANDARD COLOURS ARE BLACK AND WHITE



Lectrum Classic/Aero

Starting at \$1550^{inc}

The lectern of choice for leading hotels, conference centres and corporations.

There are a range of options to customize your lectern, with lots of colour choices for the metal frame and fabric panel as well as having your logo mounted onto the lectern.



Single or Double Bay Lectern

Starting at \$1995^{inc}

The C-Series single bay multimedia lectern come in both single and double door wide lecterns. Both lecterns are supplied with a pull out keyboard drawer and angled data panel to house touch screens, power/data points etc.

The top has been designed with a recessed "trough" which lowers the data panel and helps keep the lectern at a comfortable height.



Audio Pro Lectern

Starting at \$1250^{inc}



The high quality Audiopro lectern, stylish designed and without the heavy barrier look of older style lecterns, will be a valuable asset to any special event venue or hire company.

With a fully welded steel frame with clip on extrusions the full width work area will easily accommodate a double width foolscap file together with a practical size lip at the bottom.

Curved Truss Lectern

Curved Style Lectern Truss with Clear Acrylic Top, Adjustable Base and Signage Frame, all Fixing Bolts & Feet.

FEATURES

- Clear Acrylic Top
- Cable Access Holes
- Hole for LED uplighter
- Adjustable Feet Under Base Plate
- Road Case Package available



Starting at \$1415^{inc}

MaxHub Touch Screen Podium

The technology is simple and elegant, integrating the computer, microphones and touch screen into one stylish Aluminium column type podium.

Electric lift, flexible height adjustment and wireless deployment. Up to 6 hours battery life. Intelligent integration, 10 Point Touch, Key annotations and wireless projection to main Maxhub.

